

# 24V PREMIUM DROP-IN LITHIUM-ION BATTERIES

24V Battery Specification Sheet



LITHIUM-ION BATTERIES FOR MATERIAL HANDLING



## 5 Year 10,000 Hour Warranty

Backed by an extended warranty for years of reliable performance and heavy use.



## >4,000 Cycle Life

Delivers >4,000 cycles for long-lasting performance and lower total cost of ownership.



## No Maintenance

Engineered to run maintenance-free, removing the need for watering or frequent service.



## Rapid Charging Capabilities

Rapid opportunity charging supports efficient recharging during breaks, with full charge in as little as 2 hours.



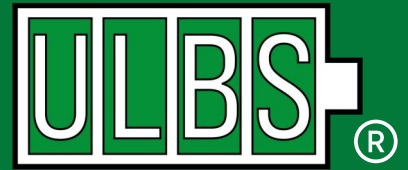
## Built-In Charger

Integrated chargers let batteries charge efficiently without external equipment, reducing downtime.



## Drop-In Ready

Fully drop-in compatible, installs seamlessly into existing equipment.



#### Battery Management System

Name: 62301E102-48V15560Ah  
Product Name: Integrated BMS Product Model: 6230-0  
Operating Voltage: 48V / Battery Supply Operating Power: <30W  
Operating Temperature: -40°F ~ 131°F Storage Temperature: -40°F ~ 212°F  
Note: Unauthorised Personnel, please do not disassemble or repair.

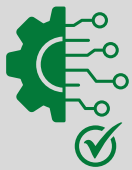
## Battery Management System

The BMS actively monitors charging, discharging, and cell balancing to ensure safe operation. By protecting against hazards and maintaining optimal conditions, it maximizes efficiency and extends battery life.

## Battery Display Indicator

The 24V batteries feature a built-in BDI that provides real-time visibility of the state of charge. This makes it easy for operators to monitor battery levels at a glance, ensuring reliable performance and timely recharging.

## Battery Safety



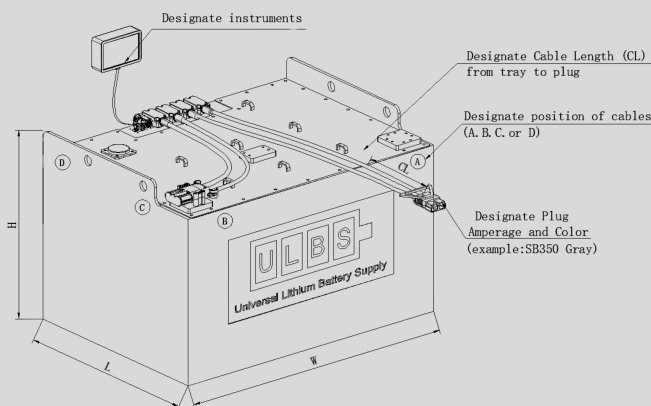
### Integrated Protection System

Safeguards against overcharge, over-discharge, short circuits, and overheating.



### Wide Operating Range

Charging temperatures from 32°F to 131°F and discharging temperatures from -18°F to 131°F



## Battery Diagram

ULBS batteries are engineered for seamless integration across diverse applications. Each unit features a rugged case and durable construction, can be configured with customized cable lengths and plug types, and has precision-designed dimensions to ensure compatibility with a wide range of OEM specifications.

Model	Capacity (Ah)	Dimensions W×L×H (in)	Weight (lbs)	Kilowatt-Hour(kWh)	Built-in charger	Maximum Charge Current
DQ-25.76-228-UBM208	228	24.50×8.80×25.78	390	5.87	Yes	30A
DQ-25.76-228-UBM285	228	24.50×11.00×24.00	610	5.87	Yes	30A
DQ-25.6-105-UBM110	105	24.63×6.50×23.63	500	2.688	Yes	30A
DQ-25.6-105-UBM108	105	24.98×7.75×23.75	464	2.688	Yes	30A
DQ-25.76-228-UBM224	228	25.00×7.50×23.00	220	5.87	Yes	30A
DQ-25.76-228-UBM164	228	25.19×10.81×23.25	440	5.87	Yes	30A
DQ-25.76-228-UBM111	228	25.38×8.63×23.25	616	5.87	Yes	30A
DQ-25.6-105-UBM107	105	25.63×6.75×23.63	500	2.688	Yes	30A
DQ-25.6-105-UBM109	105	25.91×5.75×23.23	500	2.688	Yes	30A
DQ-25.76-228-UBM205	228	26.10×7.68×25.78	220	5.87	Yes	30A
DQ-25.76-228-UBM163	228	26.10×7.68×30.00	400	5.87	Yes	30A
DQ-25.76-456-UBM121	456	26.13×12.88×31.00	1248	11.75	No	200A
DQ-25.76-302-UBM256	302	26.50×8.56×23.18	350	7.78	No	151A
DQ-25.6-210-UBM276	210	29.00×6.55×25.00	500	5.38	Yes	30A
DQ-25.76-604-UBM116	604	29.63×19.19×22.63	1513	15.56	No	200A
DQ-25.76-456-UBM120	456	30.56×12.75×26.25	1224	11.75	No	200A
DQ-25.76-604-UBM125	604	30.63×12.75×30.50	1094	15.56	No	200A
DQ-25.76-604-UBM175	604	30.72×12.79×31.22	1050	15.56	No	200A
DQ-25.76-302-UBM113	302	30.75×12.75×23.25	1094	7.78	No	151A
DQ-25.76-302-UBM160	302	30.75×12.75×23.25	1094	7.78	No	151A
DQ-25.76-302-UBM228	302	31.00×8.56×25.60	350	7.78	Yes	30A
DQ-25.76-604-UBM165	604	31.15×13.09×30.00	1050	15.56	No	200A
DQ-25.76-456-UBM161	456	31.15×13.09×30.00	1094	11.75	No	200A
DQ-25.76-302-UBM268	302	31.80×8.84×24.00	780	7.78	No	151A
DQ-25.76-456-UBM122	456	31.88×11.00×30.50	1248	11.75	No	200A
DQ-25.76-302-UBM269	302	32.00×8.00×17.59	600	7.78	No	151A
DQ-25.76-604-UBM117	604	32.63×19.19×22.63	1652	15.56	No	200A
DQ-25.6-210-UBM296	210	33.59×6.20×23.25	300	5.38	Yes	30A
DQ-25.6-210-UBM112	210	33.59×6.50×23.25	616	5.38	Yes	30A
DQ-25.76-604-UBM128	604	35.00×13.00×30.50	1473	15.56	No	200A
DQ-25.76-456-UBM114	456	35.06×13.13×22.69	1245	11.75	No	200A
DQ-25.76-456-UBM115	456	35.13×12.88×22.63	1245	11.75	No	200A
DQ-25.76-604-UBM129	604	35.13×12.88×30.50	1690	15.56	No	200A
DQ-25.76-604-UBM118	604	35.63×19.22×22.63	1769	15.56	No	200A
DQ-25.76-604-UBM127	604	35.75×11.75×30.50	1482	15.56	No	200A
DQ-25.76-604-UBM131	604	36.00×14.00×30.50	1688	15.56	No	200A
DQ-25.76-912-UBM294	912	36.00×14.00×30.50	1600	23.49	No	200A
DQ-25.76-604-UBM132	604	38.00×12.00×30.50	1695	15.56	No	200A
DQ-25.76-604-UBM133	604	38.00×13.50×30.50	1858	15.56	No	200A
DQ-25.76-912-UBM261	912	38.00×15.75×30.50	1700	23.49	No	200A
DQ-25.76-604-UBM119	604	38.13×17.94×22.63	1769	15.56	No	200A

\*\*Cable length and connector type can be customized to fit each unique application.



## Universal Lithium-ion Battery Supply

Address: 114 Empire Blvd, Suite 200, Brookshire TX 77423  
Phone: (980) 613-4372 Email: sales@ulbspower.com  
www.ulbspower.com